



# PARTS CATALOGUE NEWS

Honda Motor Co., Ltd.  
Service Division Service Information Dept.

Printed in Japan

CODE NO.	18K81HM2
PARTS CATALOGUE NEWS	ACH110CBF ACH110CBFH ACH110CBFJ
NEWS NO.	001

(MA-KD)

## NEW MODEL ACH110CBFK-MA TYPE COMPONENT PARTS-MARKETED

This Parts News ACH110CBFK-MA type parts exclusively and respectively are based ACH110CBFJ-MA type listed on the ACH110CBF Parts Catalogue.

All other parts not listed herein are the same as ACH110CBFJ-MA type parts.

Model	Area code	Type	Applicable engine serial No.	Applicable frame serial No.	Applicable throttle body identification No.
ACH110CBFK	MA	Malaysia	JF70E2116001~	PMKJF707*KB200001~	GQRGB A

## PARTS CATALOGUE NEWS

BOOKNo. : 18K81HM2

## ACH110CBF (ACH110CBFk)

No.	MODEL		ACH110CBFK							
	COLOR		Pearl magellanic black	Vivacity red	Pearl nightfall blue	Space magenta metallic	Applicable model		Applicable block No.	Ref. No.
	CODE		NH-A69P	R-331	PB-407P	RP-195M				
	Name of colored parts	Basic part No.	NHA69	R331	PB407	RP195	Initial applicable model	Final applicable model		
1	COVER SET, FR.	64300-K81-M20	ZD	ZC	ZB	ZA			F-12	1
2	COVER SET, FR. HANDLE	53210-K81-M10	ZD	ZC	ZB	ZA			F-9	4
3	COVER SET, L. BODY	83605-K81-M20	ZD	ZC	ZB	ZA			F-15	4
4	COVER SET, R. BODY	83505-K81-M20	ZD	ZC	ZB	ZA			F-15	2
5	COVER SET, RR. LICENSE LIGHT	80150-K81-M00	ZA	ZA	ZA	ZA			F-39	9
6	COVER SET, SPEEDOMETER	53280-K81-M00	ZB	ZB	ZB	ZB			F-9	5
7	COVER, CENTER	80151-K81-N00	ZB	ZB	ZB	ZB			F-15	1
8	COVER, FR. LOWER	64308-K81-N00	ZB	ZB	ZB	ZB			F-12	3
9	COVER, FR. TOP	64305-K81-H00	ZB	ZB	ZB	ZB			F-12	2
10	COVER, INNER LOWER	81141-K81-N00	ZB	ZB	ZB	ZB			F-12	6
11	COVER, INNER UPPER	81131-K81-N00	ZB	ZB	ZB	ZB			F-12	4
12	COVER, L. BODY SIDE	83620-K81-N00	ZB	ZB	ZB	ZB			F-15	5
13	COVER, R. BODY SIDE	83520-K81-N00	ZB	ZB	ZB	ZB			F-15	3
14	COVER, RR. CENTER	83700-K81-N00	ZB	ZB	ZB	ZB			F-15	6
15	COVER, RR. HANDLE	53206-K81-N00	ZB	ZB	ZB	ZB			F-9	3
16	COVER, UNDER	64340-K81-N00	ZB	ZB	ZB	ZB			F-14	2
17	FENDER, FR.	61100-K81-N00	ZF	ZD	ZB	ZB			F-11	1
18	HOOK, LUGGAGE	81132-GAH-000	ZW	ZW	ZW	ZW			F-12	5
19	LID, BATTERY	64460-K81-N00	ZB	ZB	ZB	ZB			F-14	3
20	MARK	86531-KYZ-710	ZA	ZA	ZA	ZA			F-48	4

## PARTS CATALOGUE NEWS

BOOKNo. : 18K81HM2

## ACH110CBF (ACH110CBFK)

No.	MODEL		ACH110CBFK							
	COLOR		Pearl magellanic black NH-A69P	Vivacity red R-331	Pearl nightfall blue PB-407P	Space magenta metallic RP-195M	Applicable model		Applicable block No.	Ref. No.
	CODE		NHA69	R331	PB407	RP195	Initial applicable model	Final applicable model		
	Name of colored parts	Basic part No.								
21	MARK	86534-K81-M10	ZD	ZC	ZB	ZA			F-48	5
22	MARK, HONDA	86101-K81-M00	ZA	ZA	ZA	ZA			F-48	1
23	MARK, HONDA	86102-K81-M20	ZD	ZC	ZB	ZA			F-48	2
24	MARK, HONDA	86811-K20-900	ZB	ZB	ZB	ZB			F-48	8
25	PLUG, HOLE	90656-GCC-000	ZC	ZC	ZC	ZC			F-24	13
26	PROTECTOR, MUFFLER	18318-K81-N00	ZB	ZB	ZB	ZB			F-30	4
27	STEP, FLOOR	64310-K81-N00	ZB	ZB	ZB	ZB			F-14	1
28	STRIPE A, L. BODY COVER	86832-K81-M20	ZD	ZC	ZB	ZA			F-48	20
29	STRIPE A, R. BODY COVER	86831-K81-M20	ZD	ZC	ZB	ZA			F-48	19
30	STRIPE B, L. BODY COVER	86834-K81-M20	ZD	ZC	ZB	ZA			F-48	22
31	STRIPE B, R. BODY COVER	86833-K81-M20	ZD	ZC	ZB	ZA			F-48	21
32	STRIPE, L. FR. COVER	86642-K81-M20	ZD	ZC	ZB	ZA			F-48	18
33	STRIPE, R. FR. COVER	86641-K81-M20	ZD	ZC	ZB	ZA			F-48	17
34	WHEEL SUB ASSY., FR.	44650-K81-N50	ZA	ZA	ZA	ZA			F-20-40	6
35	WHEEL SUB ASSY., RR.	42650-K46-NA0	ZA	ZA	ZA	ZA			F-22-30	2

## PARTS CATALOGUE NEWS

BOOKNo. :18K81HM2

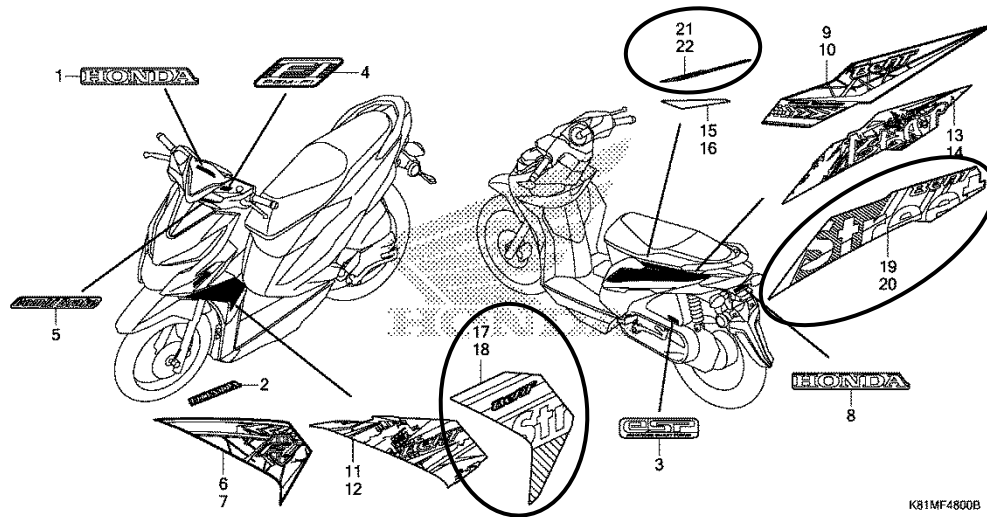
Block No.	Ref. No.	Part No.	Description	Reqd. QTY			Base Part No.	Parts catalogue code
				A	B	C		
F-9	5	53280-K81-M00ZB	COVER SET, SPEEDOMETER (WL) *NHA69P*. PEARL MAGELLANIC BLACK	-	-	1	MA	
			COVER SET, SPEEDOMETER (WL) *TYPE2*.....	-	-	0	53280-K81-M10ZA MA	
			COVER SET, SPEEDOMETER (WL) *TYPE1*.....	-	-	0	53280-K81-M10ZB MA	
F-11	1	61100-K81-N00ZB	FENDER, FR. *NHA96P*. PEARL METALLOID WHITE	-	-	1	MA	
		61100-K81-N00ZF	FENDER, FR. *NHA95M*. SWORD SILVER METALLIC	-	-	1	MA	
F-12	1	64300-K81-M20ZA	COVER SET, FR. (WL) *TYPE4*.....	-	-	1	64300-K81-M10ZA MA	
		64300-K81-M20ZB	COVER SET, FR. (WL) *TYPE3*.....	-	-	1	64300-K81-M10ZB MA	
		64300-K81-M20ZC	COVER SET, FR. (WL) *TYPE2*.....	-	-	1	64300-K81-M10ZC MA	
		64300-K81-M20ZD	COVER SET, FR. (WL) *TYPE1*.....	-	-	1	64300-K81-M10ZD MA	
F-15	2	83505-K81-M20ZA	COVER SET, R. BODY (WL) *TYPE4*.....	-	-	1	83505-K81-M10ZA MA	
		83505-K81-M20ZB	COVER SET, R. BODY (WL) *TYPE3*.....	-	-	1	83505-K81-M10ZB MA	
		83505-K81-M20ZC	COVER SET, R. BODY (WL) *TYPE2*.....	-	-	1	83505-K81-M10ZC MA	
		83505-K81-M20ZD	COVER SET, R. BODY (WL) *TYPE1*.....	-	-	1	83505-K81-M10ZD MA	
	4	83605-K81-M20ZA	COVER SET, L. BODY (WL) *TYPE4*.....	-	-	1	83605-K81-M10ZA MA	
		83605-K81-M20ZB	COVER SET, L. BODY (WL) *TYPE3*.....	-	-	1	83605-K81-M10ZB MA	

PARTS CATALOGUE NEWS

BOOKNo. :18K81HM2

Block No.	Ref. No.	Part No.	Description	Reqd. QTY			Base Part No.	Parts catalogue code
				ACH110CBF H	J	K		
		83605-K81-M20ZC	COVER SET, L. BODY (WL) *TYPE2*.....	-	-	1	83605-K81-M10ZC	MA
		83605-K81-M20ZD	COVER SET, L. BODY (WL) *TYPE1*.....	-	-	1	83605-K81-M10ZD	MA
F-20-40	6	44650-K81-N50ZA	WHEEL SUB ASSY., FR. *NH303M*. MAT AXIS GRAY METALLIC	-	-	1	44650-K81-N00ZA	MA
F-22-30	2	42650-K46-NA0ZA	WHEEL SUB ASSY., RR. *NH303M*. MAT AXIS GRAY METALLIC	-	-	1	42650-K81-N00ZA	MA

F-48 MARK/STRIPE



K81MF4800B

F-48	1	86101-K81-M00ZA	MARK, HONDA (60MM) *TYPE1*.....	-	-	1	86101-K81-M10ZB	MA
			MARK, HONDA (60MM) *TYPE2*.....	-	-	0	86101-K81-M10ZA	MA
	2	86102-K81-M20ZA	MARK, HONDA (100MM) *TYPE4*.....	-	-	2	86102-K81-M10ZA	MA

## PARTS CATALOGUE NEWS

BOOKNo. :18K81HM2

Block No.	Ref. No.	Part No.	Description	Reqd. QTY			Base Part No.	Parts catalogue code
				A	C	H		
		86102-K81-M20ZB	MARK, HONDA(100MM) *TYPE3*.....	-	-	2	86102-K81-M10ZB	MA
		86102-K81-M20ZC	MARK, HONDA(100MM) *TYPE2*.....	-	-	2	86102-K81-M10ZC	MA
		86102-K81-M20ZD	MARK, HONDA(100MM) *TYPE1*.....	-	-	2	86102-K81-M10ZD	MA
	11		STRIPE, R. FR. COVER *TYPE4*.....	-	-	0	86641-K81-M10ZA	MA
			STRIPE, R. FR. COVER *TYPE3*.....	-	-	0	86641-K81-M10ZB	MA
			STRIPE, R. FR. COVER *TYPE2*.....	-	-	0	86641-K81-M10ZC	MA
			STRIPE, R. FR. COVER *TYPE1*.....	-	-	0	86641-K81-M10ZD	MA
	12		STRIPE, L. FR. COVER *TYPE4*.....	-	-	0	86642-K81-M10ZA	MA
			STRIPE, L. FR. COVER *TYPE3*.....	-	-	0	86642-K81-M10ZB	MA
			STRIPE, L. FR. COVER *TYPE2*.....	-	-	0	86642-K81-M10ZC	MA
			STRIPE, L. FR. COVER *TYPE1*.....	-	-	0	86642-K81-M10ZD	MA
	13		STRIPE A, R. BODY COVER *TYPE4*.....	-	-	0	86831-K81-M10ZA	MA
			STRIPE A, R. BODY COVER *TYPE3*.....	-	-	0	86831-K81-M10ZB	MA
			STRIPE A, R. BODY COVER *TYPE2*.....	-	-	0	86831-K81-M10ZC	MA
			STRIPE A, R. BODY COVER *TYPE1*.....	-	-	0	86831-K81-M10ZD	MA
	14		STRIPE A, L. BODY COVER *TYPE4*.....	-	-	0	86832-K81-M10ZA	MA

## PARTS CATALOGUE NEWS

BOOKNo. :18K81HM2

Block No.	Ref. No.	Part No.	Description	Reqd. QTY			Base Part No.	Parts catalogue code
				A	H	K		
			STRIPE A, L. BODY COVER *TYPE3*.....	-	-	0	86832-K81-M10ZB	MA
			STRIPE A, L. BODY COVER *TYPE2*.....	-	-	0	86832-K81-M10ZC	MA
			STRIPE A, L. BODY COVER *TYPE1*.....	-	-	0	86832-K81-M10ZD	MA
	15		STRIPE B, R. BODY COVER *TYPE4*.....	-	-	0	86833-K81-M10ZA	MA
			STRIPE B, R. BODY COVER *TYPE3*.....	-	-	0	86833-K81-M10ZB	MA
			STRIPE B, R. BODY COVER *TYPE2*.....	-	-	0	86833-K81-M10ZC	MA
			STRIPE B, R. BODY COVER *TYPE1*.....	-	-	0	86833-K81-M10ZD	MA
	16		STRIPE B, L. BODY COVER *TYPE4*.....	-	-	0	86834-K81-M10ZA	MA
			STRIPE B, L. BODY COVER *TYPE3*.....	-	-	0	86834-K81-M10ZB	MA
			STRIPE B, L. BODY COVER *TYPE2*.....	-	-	0	86834-K81-M10ZC	MA
			STRIPE B, L. BODY COVER *TYPE1*.....	-	-	0	86834-K81-M10ZD	MA
	17	86641-K81-M20ZA	STRIPE, R. FR. COVER *TYPE4*.....	-	-	1		MA
		86641-K81-M20ZB	STRIPE, R. FR. COVER *TYPE3*.....	-	-	1		MA
		86641-K81-M20ZC	STRIPE, R. FR. COVER *TYPE2*.....	-	-	1		MA
		86641-K81-M20ZD	STRIPE, R. FR. COVER *TYPE1*.....	-	-	1		MA
	18	86642-K81-M20ZA	STRIPE, L. FR. COVER *TYPE4*.....	-	-	1		MA

## PARTS CATALOGUE NEWS

BOOKNo. :18K81HM2

Block No.	Ref. No.	Part No.	Description	Reqd. QTY			Base Part No.	Parts catalogue code
				A	C	H		
		86642-K81-M20ZB	STRIPE, L. FR. COVER *TYPE3*.....	-	-	1	MA	
		86642-K81-M20ZC	STRIPE, L. FR. COVER *TYPE2*.....	-	-	1	MA	
		86642-K81-M20ZD	STRIPE, L. FR. COVER *TYPE1*.....	-	-	1	MA	
19		86831-K81-M20ZA	STRIPE A, R. BODY COVER *TYPE4*.....	-	-	1	MA	
		86831-K81-M20ZB	STRIPE A, R. BODY COVER *TYPE3*.....	-	-	1	MA	
		86831-K81-M20ZC	STRIPE A, R. BODY COVER *TYPE2*.....	-	-	1	MA	
		86831-K81-M20ZD	STRIPE A, R. BODY COVER *TYPE1*.....	-	-	1	MA	
20		86832-K81-M20ZA	STRIPE A, L. BODY COVER *TYPE4*.....	-	-	1	MA	
		86832-K81-M20ZB	STRIPE A, L. BODY COVER *TYPE3*.....	-	-	1	MA	
		86832-K81-M20ZC	STRIPE A, L. BODY COVER *TYPE2*.....	-	-	1	MA	
		86832-K81-M20ZD	STRIPE A, L. BODY COVER *TYPE1*.....	-	-	1	MA	
21		86833-K81-M20ZA	STRIPE B, R. BODY COVER *TYPE4*.....	-	-	1	MA	
		86833-K81-M20ZB	STRIPE B, R. BODY COVER *TYPE3*.....	-	-	1	MA	
		86833-K81-M20ZC	STRIPE B, R. BODY COVER *TYPE2*.....	-	-	1	MA	
		86833-K81-M20ZD	STRIPE B, R. BODY COVER *TYPE1*.....	-	-	1	MA	
22		86834-K81-M20ZA	STRIPE B, L. BODY COVER *TYPE4*.....	-	-	1	MA	



PARTS CATALOGUE NEWS

BOOKNo. :18K81HM2

Block No.	Ref. No.	Part No.	Description	Reqd. QTY			Base Part No.	Parts catalogue code
				A	C	F		
		86834-K81-M20ZB	STRIPE B, L. BODY COVER *TYPE3*.....	-	-	1	MA	
		86834-K81-M20ZC	STRIPE B, L. BODY COVER *TYPE2*.....	-	-	1	MA	
		86834-K81-M20ZD	STRIPE B, L. BODY COVER *TYPE1*.....	-	-	1	MA	